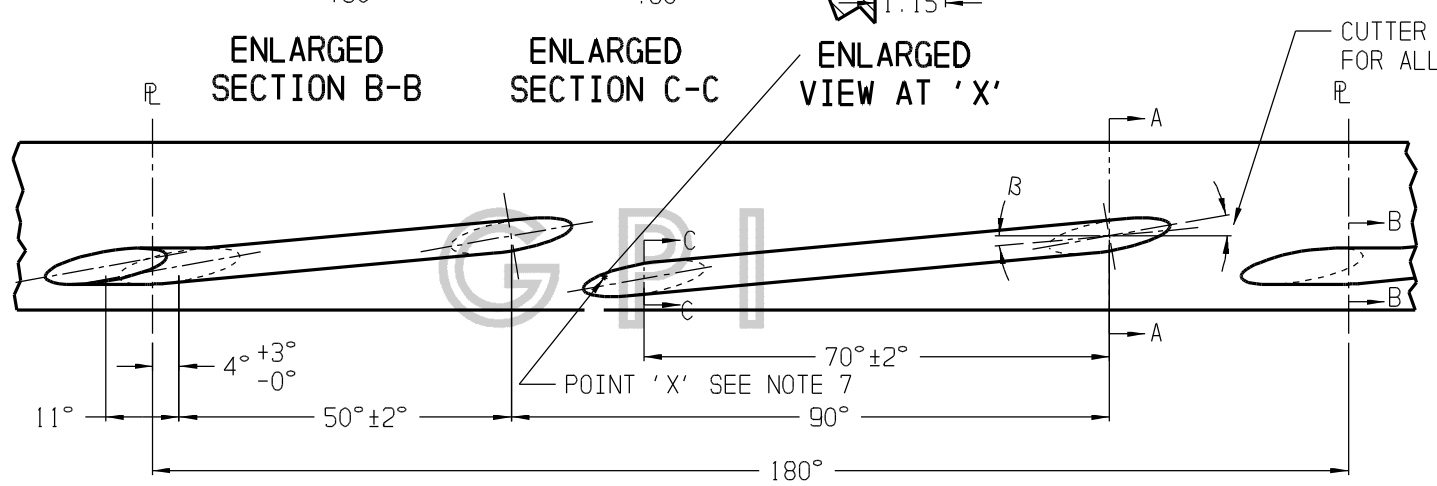
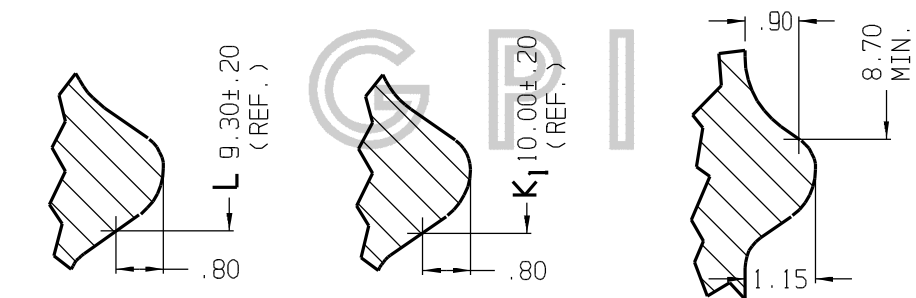
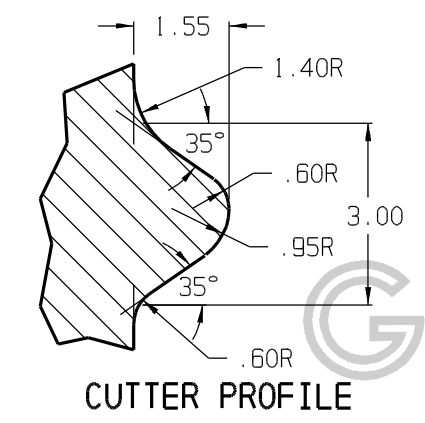
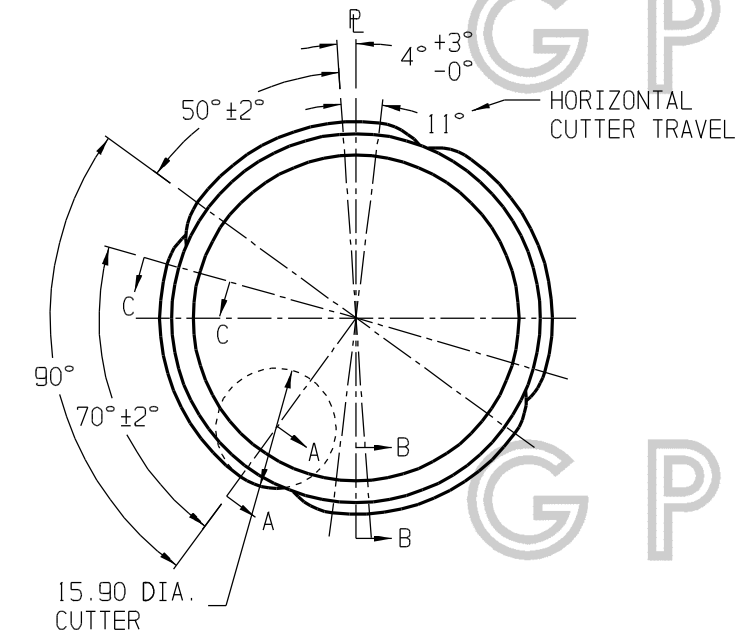
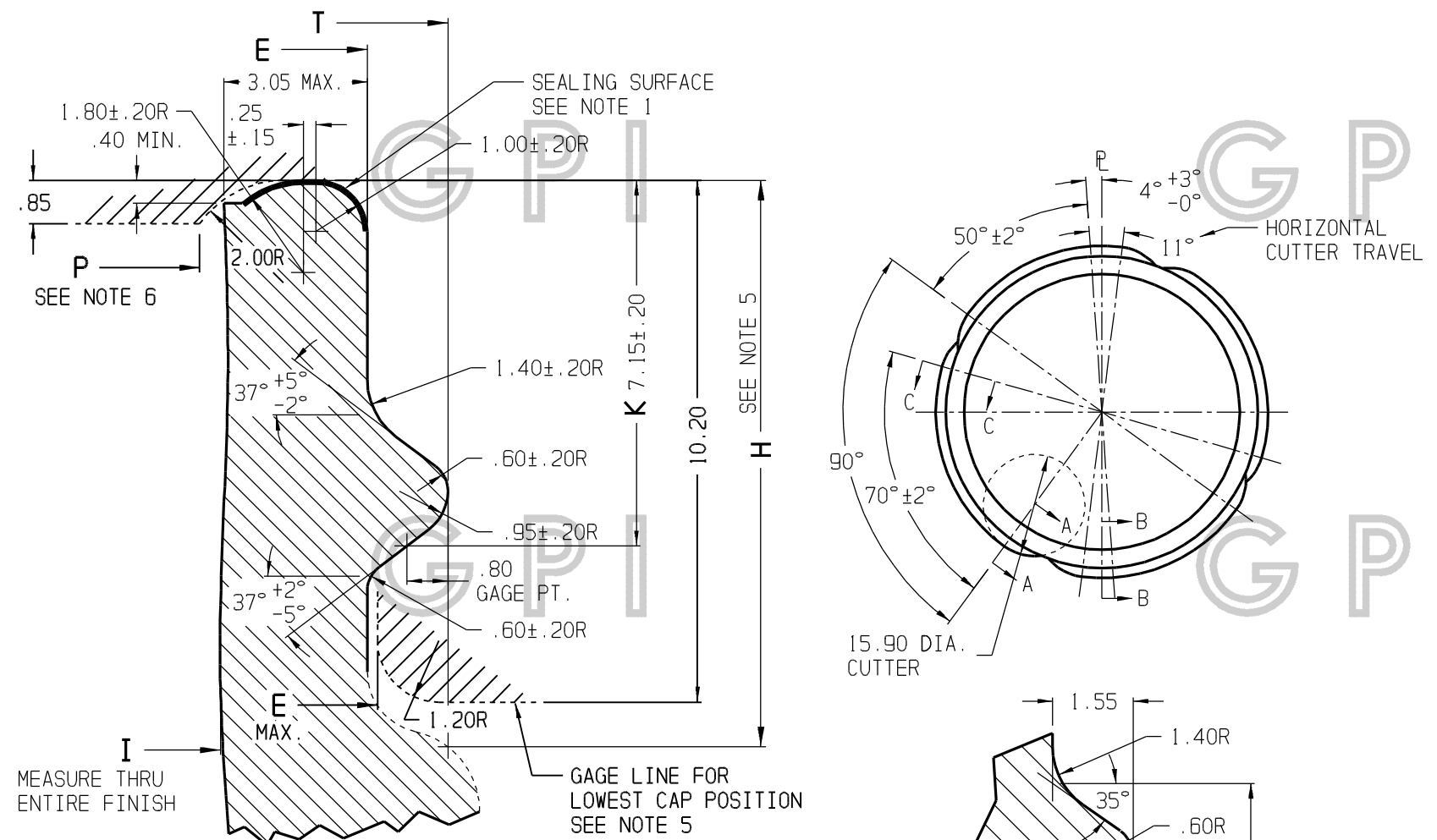


SIZE	E SEE NOTE 2		T SEE NOTE 2		I MIN.	P SEE NOTE 6	B	T.P.I.	LEAD
	IDEAL	TOL.	IDEAL	TOL.					
53	48.80	±.40	51.95	±.40	37.30	42.25	5° 14'	1.75	14.50
58	52.70	±.40	55.85	±.40	41.30	46.15	4° 52'	1.75	14.50



1. THIS IS A TOP SEAL FINISH AND PROPER FUNCTION OF CLOSURE REQUIRES THAT THE SEALING SURFACE MUST BE SMOOTH AND FREE OF IRREGULARITIES THAT WOULD PREVENT A VACUUM SEAL BEING MADE, OR INTERFERE WITH ROTATION OF CLOSURE.
2. BEST SEALING RESULTS ARE OBTAINED WHEN GLASS FINISH IS ROUND AND TO THE DIAMETERS SHOWN IN COLUMNS HEADED "IDEAL." THE AVERAGE OF THE MAXIMUM AND MINIMUM EXTREMES OF THE 'E' AND 'T' DIAMETERS SHOULD BE AS CLOSE AS POSSIBLE TO DIMENSIONS SHOWN IN COLUMNS HEADED "IDEAL."
3. WHEN 'E' AND 'T' DIAMETERS ARE AT MAXIMUM, THEY MUST BE CONCENTRIC TO PREVENT INTERFERENCE DURING CAP APPLICATION.
4. 'T' DIAMETER MUST BE MAINTAINED THROUGHOUT THREAD TRAVEL.
5. DOTTED CONTOUR IS OPTIONAL, BUT MUST CLEAR CAP LIMITS SHOWN BY SHADED AREA ABOVE 10.20 DIMENSION.
6. SHADED AREA SHOWS CONTOUR TO BE CLEARED BY THE TOP OF THE GLASS FINISH FOR CORRECT SEALING RESULTS.
7. IN ORDER TO PROVIDE CAM-OFF ACTION FOR CAP REMOVAL TOP SURFACE OF TWO OPPOSING THREADS FROM POINT 'X' UPWARD ALONG HELIX ANGLE SHOULD BE SMOOTH AND SUBSTANTIALLY FILLED.
8. THE CUTTER IS INCLINED AT 10° ANGLE FOR ALL THREADS AND ALL CUTS.
9. $TANGENT B = \frac{LEAD}{\pi (\text{MEAN BETWEEN MEAN 'T' AND MEAN 'E'})}$

THIS OFFICIAL GLASS PACKAGING INSTITUTE PRINT CONSTITUTES ONE IN A SERIES OF VOLUNTARY STANDARDS INTENDED TO PROVIDE A BASIS FOR ACHIEVING COMPATIBILITY AND INTERCHANGEABILITY BETWEEN MANUFACTURERS AND USERS OF GLASS CONTAINERS AND CLOSURES THEREFOR. THE USER SHOULD BE AWARE THAT OTHER CONTAINER AND CLOSURE DESIGNS MAY DIFFER FROM THIS VOLUNTARY STANDARD, AND IT IS THE USER'S RESPONSIBILITY TO MAKE THE FINAL DETERMINATION AS TO DESIGN AND COMPATIBILITY. GPI ASSUMES NO RESPONSIBILITY FOR EITHER THE USE OF OR INTERPRETATION OF THE STANDARD, FOR IT BEING CURRENT, OR FOR THE DETERMINATION WHETHER ANY PARTICULAR MANUFACTURER'S PRODUCT CONFORMS TO THE STANDARD. THIS DRAWING CONTAINS INFORMATION TAKEN FROM ONE OR MORE PRINTS OF THE GLASS PACKAGING INSTITUTE (GPI). GPI OWNS ALL RIGHT, TITLE AND INTEREST IN THE COPYRIGHTS TO THIS DRAWING AND TO THESE PRINTS. GPI REQUIRES THAT YOU NOT REPRODUCE THIS DRAWING FOR OR DISTRIBUTE THIS DRAWING TO ANY THIRD PARTY WITHOUT GPI'S WRITTEN CONSENT. ANY INQUIRIES OR SUGGESTIONS CONCERNING THIS STANDARD CAN BE ADDRESSED TO THE GLASS PACKAGING INSTITUTE, WASHINGTON D.C. AT WWW.GPI.ORG.

COPYRIGHT © GPI 1994, 1999

Edward A. Grant CHAIRMAN	PRINTED AND DISTRIBUTED AS A VOLUNTARY STANDARD BY GLASS PACKAGING INSTITUTE COMMITTEE ON DESIGN AND SPECIFICATIONS	APPROVED FOR PUBLICATION 02-05-99	SUPERSEDES DWG. NO. FM-20203
GLASS FINISH NUMBER 2020M		GPI DWG. NO.	
METRIC TOP SEAL VACUUM LUG FINISH, SIZES 53 AND 58		FM-20204	